

ever-fit

INSTRUCTION

Dansk



STEP | UP



SAFETY WARNINGS



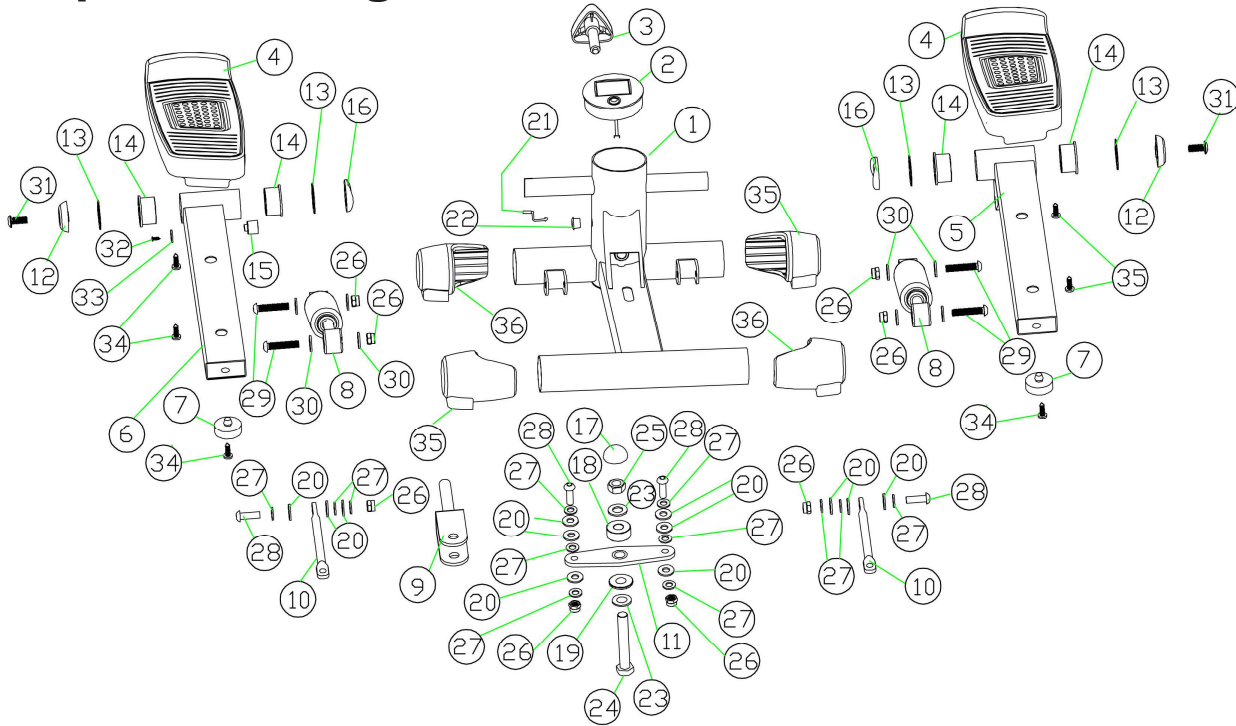
TILFÆRDIGHEDER TILLADT

- Use the equipment in households only. Make sure to explain how to safely use this equipment to all your family members and to any friends whom you allow the use.
- Use the equipment on a flat surface only and cover the floor or carpet below the equipment to prevent them from being damaged.
- Make sure that the equipment user has understood the instructions clearly, watching the first steps of the training. Keep the instruction manual always at hand for quick reference, in case of necessity.
- Make sure that the equipment is used only by persons over 16 and in good physical conditions.
- Always wear clothes suitable for training, not hindering movements or perspiration. Use trainer shoes. Do not use leather sole shoes or shoes with soles in any stiff material.
- Do not allow other people, children or pets to get near the equipment because of the danger caused by moveable parts. During your training firmly grasp the grips with both hands, as per the instructions in the manual. Keep your heart rate under control and adjust the exercise intensity consequently during the training.
- If you should feel light-headed, or breathlessness or if you feel chest pain during your training with the equipment, immediately stop and consult a doctor.
- Periodically check that bolts and screws are adequately tightened.

DON'T DO BEHAVIOURS

- DO NOT use the equipment in fitness centers or in commercial premises. Do not rent it. This equipment is not designed for intensive use in professional activities or for rehabilitation purposes.
- DO NOT place glasses or bottles containing drinks next to or above the equipment.
- DO NOT ruin the equipment with pointed or sharp objects, brushes or abrasive sponges, or aggressive chemical substances.
- DO NOT disassemble parts of the equipment, except if the operation is requested by the instruction manual.
- DO NOT place the equipment in any building basement, cellars, humid areas in general. Do not leave it exposed to atmospheric agents (rain, sun, etc).
- DO NOT allow children or pets to get near the equipment. It is advisable to place the equipment in a dedicated room with a door to prevent access to anybody non authorized to use the product.
- NEVER use the equipment if it is damaged or is not in perfect conditions. In case of breakdown or failure of the equipment switch it off and do not tamper with it. For any repairing please only contact specialized assistance services.
- Always wear gym shoes suitable for running.
- DO NOT wear synthetic clothes or linsey woolsey fabric which do not allow natural perspiration during training. Use of unsuitable clothes can cause hygienic problems.

Explosion Diagram



Parts List

PART NO.	DESCRIPTION	QT Y		PART NO.	DESCRIPTION	QT Y
1	Main frame	1		14	Alex sleeve	4
2	Display	1		15	Magnetic fix base	1
3	Adjustment knob	1		21	Cable	1
4	Pedal	2		22	Protective sheeve	1
5	Support pole (R) for pedal	1		29	Screws	4
6	Support pole (R) for pedal	1		30	Cushion	8
7	Cushion rubber	2		31	screws	2
8	Hydraulic rod	2		32,33	Cushion	1
9 ,11,17, 18,19,20 ,23,24,2 5,26,27, 28	Power drive unit	1 set		34	Tapping screws	6
10,20,26 ,27,28	Master rod unit	2 set		35,36	Plastic cover	4
12,16	Plastic cover	4				
13	Cushion	4				

Produkt betjeningsvejledning

Driftsprocedure

1. Drej justeringsknappen for at ændre pedalens bevægelsesområde.
2. Justér justeringsknapens spænding for at sikre, at trækledningen er godt tilsluttet for korrekt funktion.
3. Computeren lukkes automatisk, hvis der ikke er bevægelse i 4 minutter.
4. Computeren tændes automatisk, når træningen begynder.
5. Alle funktioner stopper automatisk, og et "STOP" -skilte vises i øverste venstre hjørne af computeren, når der ikke er bevægelse i 4 sektioner. Funktioner begynder igen, når du begynder at træne.

Function Parameter

SCAN	Scanner automatisk hver funktion i rækkefølge.
TIME	Viser den samlede tid for træningssessionen starter fra 00:00 - 99:59.
COUNT	Viser det samlede antal trin, der er taget under træningssessionen.
REPS/MIN	Viser gentagelser (eller trin) pr. Minut under træningssessionen.
CAL	Viser de forbrændte kalorier under træningssessionen. BEMÆRK: Dette er en omtrentlig måling.
FUNCTION BUTTON	For at vælge TID, TALE, REPS / MIN, KALORIER For at NULSTIL værdierne til standard. Tryk på 4 sek for at nulstille værdien.

Product Installation

Step 1



Åbn computeren (del: 22), installer batteriet i den rigtige position (billede: 1)

Step 2



Tilslut computeren (del: 22) med hoveddrømme-kabel (del: 22) (billede: 2)

Step 3



Installer computeren (del: 22) i hovedrammen (del: 1) (billede: 3)





GARLANDO SPA

Via Regione Piemonte, 32 - Zona Industriale D1

15068 - Pozzolo Formigaro (AL) - Italy

www.everfit.it - info@everfit.it